

Gaming  
Imaging  
3D  
Video  
Entertainment  
Photos  
Graphics



EVGA Corp. • 2900 Saturn Street, Suite B • Brea, CA 92821 • [www.evga.com](http://www.evga.com)

# KILLER XENO™ PRO

## Installation Guide

**Table of contents**

**Installation Guide** ..... 2

**Using Hardware Accelerated Voice Chat** ..... 3

**Configuring the Killer Xeno** ..... 5

**Setting the Lag and Latency Reduction (LLR) mode** ..... 6

**Setting Link Speed** ..... 7

**Setting Duplex Mode** ..... 8

**Configuring Advanced Setting** ..... 9

**Configuring Killer Bandwidth Control** ..... 10

**Configuring Killer Firewall** ..... 14

**Changing Alert Settings** ..... 15

**Adding Killer Firewall Exceptions** ..... 16

**Deleting Killer Firewall Exceptions** ..... 16

**Technical Support** ..... 17

**Warranty Information** ..... 17

**EVGA Advanced RMA (EAR) Program** ..... 17

**EVGA Online Community** ..... 17

**EVGA FAQ** ..... 17

**EVGA Gaming** ..... 17

**FOLDING@EVGA** ..... 17

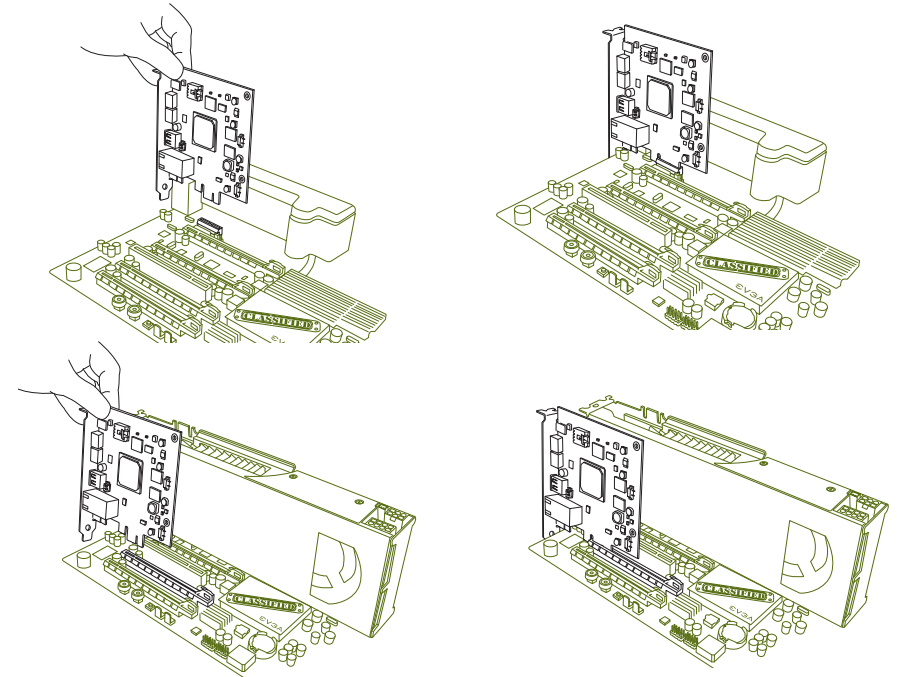
**MODS RIGS** ..... 18

**Compliance Information** ..... 18

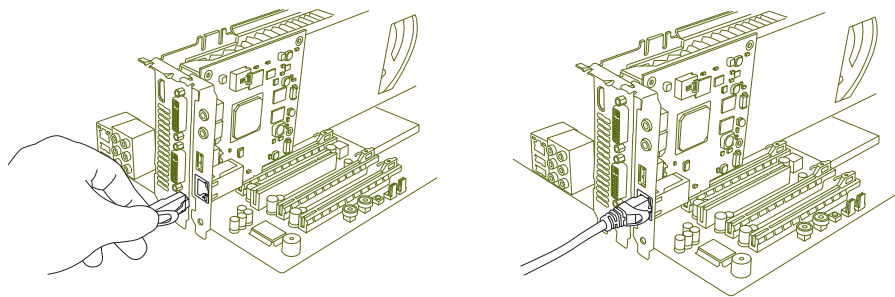
**Trademark Information** ..... 18

**Installation Guide**

1. Remove the current network driver installed on your computer. In Windows Vista, go to Start > Control Panel > Programs > Uninstall a Program. NOTE: if using an onboard network controller, it is recommended to first disable the onboard network controller from within your system BIOS.
2. Turn off your computer and disconnect the power cord.
3. Remove any existing network cards (if applicable).
4. Install the EVGA Killer Xeno Pro Gaming network card into a 1x PCI-E slot. NOTE: If you do not have an empty 1x PCI-E slot, you can install the card into any open PCI-E slot, the below images show both methods of installation.



5. Reinstall the cover on your computer and reconnect any cables that you removed earlier in the installation.
6. Plug an Ethernet Cable into the EVGA Killer Xeno Pro. (RJ-45 port)



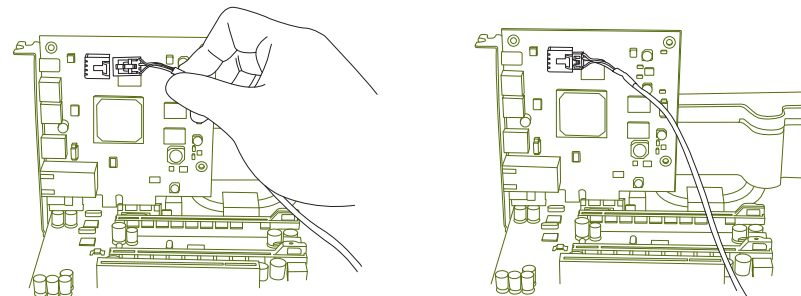
7. Power up your computer.
8. Insert the driver installation CD or double click on the EVGA Killer Xeno Pro driver executable file that can be downloaded at [www.evga.com/support/drivers](http://www.evga.com/support/drivers). The setup program takes over and will walk you through the driver installation process.
9. You may need to reboot your PC once the driver installation is complete.

### Using Hardware Accelerated Voice Chat

If you are going to use the EVGA Killer Xeno Pro's built in hardware voice chat, you will need to connect the included audio input/outputs correctly. There are two options for doing this, and internal, or external cable. NOTE: You only need to use one of the below two options.

#### Internal Cable:

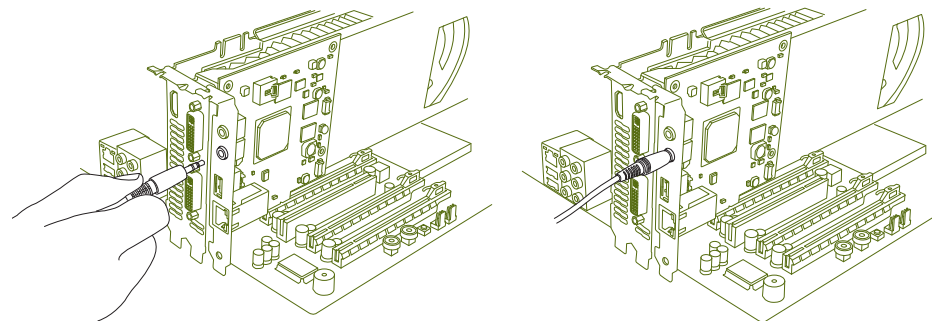
1. Connect the four-pin audio cable to the four-pin socket near the top of the EVGA Killer Xeno Pro card.



2. Connect the other end of the audio cable to the input labeled "AUX" or "CD" on your motherboard (if using onboard audio) or your soundcard (if using a dedicated sound card).
3. If you do not have a four-pin audio connector available on your motherboard or sound card, follow the directions below for External Cable.

#### External Cable:

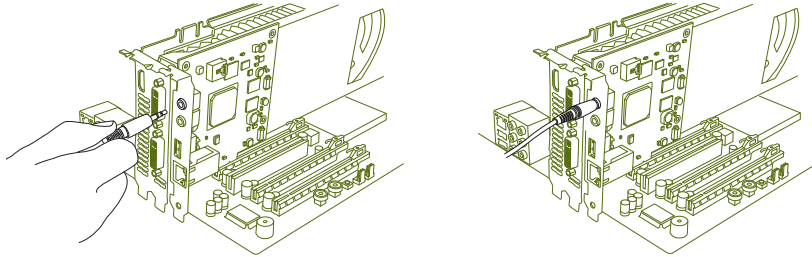
1. Connect the external audio cable to the LINE OUT jack on the EVGA Killer Xeno Pro bracket.



2. Connect the other end of the external audio cable to the MIC IN jack on your motherboard (if using onboard audio) or your soundcard (if using a dedicated sound card).

**Headset / MIC connection:**

1. Connect your microphone or headset microphone to the MIC IN jack on the EVGA Killer Xeno Pro.



2. Connect your headphones or speakers to the LINE OUT or AUDIO OUT jack on your motherboard (if using onboard audio) or your soundcard (if using a dedicated sound card).

**Headset Only Option:**

A third option is to use your headset exclusively for Xeno voice chat, and leave your speakers for game audio without mixing the two in your sound card's control panel. To do this, connect the microphone plug on your headset to the microphone jack on your Killer Xeno, and the headphone plug on your headset to the audio-out jack on the Killer Xeno. Remember – this option will leave the voice chat audio exclusively on the Killer Xeno.

**Configuring the Killer Xeno**

The Killer Xeno ships with the best configuration for all online games. Unless you encounter a technical problem and are advised by a support specialist to change any of these settings, it is recommended to keep the default settings.

Note: The default settings are optimized to fight lag on your computer, resulting in smoother game play in many online games. These effects are best noticed after repeated play in intense multiplayer gaming sessions, such as big raids or combat in MMO or FPS games.

**Optimized Default Settings**

Feature	Optimized Default Setting
LLR Mode	Game (bypasses Windows Network Stack)
Link Speed	Auto
Link Duplex (Duplex mode)	None
Nagle Algorithm Control	Enabled TCP No Delay
Ack Frequency	Enabled TCP Ack Frequency
Maximum Transmission Unit	1500 bytes
Killer Bandwidth Control	On
Killer Firewall	Off

**Setting the Lag and Latency Reduction (LLR) mode**

Two Lag and Latency Reduction (LLR) modes are available on the Killer Xeno:

- **Game Mode** — optimizes the Killer Xeno for online gaming by allowing the Killer Xeno to bypass the Windows Network Stack, prioritize game data, and free up system resources.

Note: Other installed network cards may not function properly with LLR Game Mode selected. It is recommended that you disable all other network cards if you want to use LLR Game Mode.

- **Application Mode** — operates the Killer Xeno as an optimized, "normal" network card. Use this mode to run programs that require access to the Windows Network Stack (such as VPN clients), or for troubleshooting applications that are not functioning in LLR Game Mode.

To set the LLR mode:

1. Right-click on the **Killer Xeno tray icon**.
2. Select the **LLR mode**.



### Setting Link Speed

Link speed determines how fast the Killer Xeno connects to the local network or Internet. In most cases, your local network will be much faster than your Internet connection.

The following table shows the available speeds and requirements for each.

Speed	Description	Requirement
Auto	Auto-negotiates the fastest available speed based upon the configuration of your local network	None (recommended setting)
10 Mb	Configures the Killer Xeno for 10 Mb connections only	Your local network connection must support 10 Mb Ethernet networking connections
100 Mb	Configures the Killer Xeno for 100 Mb connections Note that speeds up to 100 Mb are also supported	Your local network connection must support 100 Mb Ethernet networking connections
1000 Mb	Configures the Killer Xeno for 1000 Mb (1 Gigabit) connections Note that speeds up to 1000 Mb (are also supported	Your local network connection must support 1 Gigabit (1000 Mb) Ethernet networking connections

To set the link speed:

1. Right-click on the **Killer Xeno** tray icon.
2. Select **Xeno Configuration**.
3. Select the **Main** tab.
4. Under **Xeno NIC**, open the **Mode** drop-down menu and select **Normal**.



Note: The Killer Xeno must be in Normal mode to set the link speed.

5. Under **General**, open the **Link Speed** drop-down menu and select the speed for your network connection.
6. Click **OK**.

### Setting Duplex Mode

The following table shows the available duplex modes.

The duplex mode should be changed from the default setting only if the Killer Xeno is connected to an older switch or router (for example, a switch or router manufactured in 1998 or earlier).

Mode	Description
Full Duplex	Default setting This is the recommended setting for connecting all recent consumer home switches, routers, or gateways.
Half Duplex	Restricts the connection to half duplex mode, and limits overall performance for your Killer Xeno. This setting should be used only if you are connecting to legacy networking equipment (manufactured in 1998 or earlier).

To change the duplex mode:

1. Right-click on the **Killer Xeno tray icon**.
2. Select **Xeno Configuration**.
3. Select the **Main** tab.

4. Under **Xeno NIC**, open the Mode drop-down menu and select **Normal**.

Note: The Killer Xeno must be in Normal mode to change the duplex mode.

5. Under **General**, open the **Link Duplex** drop-down menu and select the preferred speed for your local network connection.
6. Click **OK**.

### Configuring Advanced Settings

Advanced settings should be changed only in special cases or if advised by a technical support specialist. It is recommended to use the default settings.

The following table shows the advanced settings and their recommended default settings.

Setting	Description	Default Setting
Nagle Algorithm Control Enable TCP No Delay	Nagle Algorithm Control delays sending a data packet until the packet is full. This prevents poorly written programs from flooding a network. Turning off Nagle Algorithm Control may improve TCP latency at the risk of flooding the local network. Enabling TCP No Delay creates this registry entry: HKEY_LOCAL_MACHINE\SOFTWARE\Microsoft\MSMQ\Parameters\TCPNo Delay	Enabled Change this setting only if advised by technical support.

Ack Frequency	Determines the frequency at which received data packets are acknowledged. Change Ack Frequency only if you are selectively attempting to change latency behavior in specific programs. <b>IMPORTANT:</b> Be aware of potential harm in other applications when changing this setting; you may need to change to the default setting to achieve normal behavior in standard programs.	Enabled Change this setting only if you notice problems with games or applications, or if advised by technical support.
Maximum Transmission Unit (MTU)	Maximum size of a data packet that the Killer Xeno broadcasts. Finding an optimal size for your Internet conditions may improve performance.	1500 bytes Consult your internet service provider for recommended MTU size, or test the MTU for the maximum size that you can send without fragmentation in your location.

To configure advanced settings:

1. Right-click on the **Killer Xeno tray icon**.
2. Select **Xeno Configuration**.
3. Select the **Main** tab.

4. Under **Xeno NIC**, open the Mode drop-down menu and select **Advanced**.

Note: The Killer Xeno must be in Advanced mode to display the advanced settings, which appear on the TCP tab.

5. Select the **TCP tab**.
6. Configure the settings. See the previous table for a description of each setting.
7. Click **OK**.

### Configuring Killer Bandwidth Control

Killer Bandwidth Control is a powerful feature that allows your computer to do more while you game.

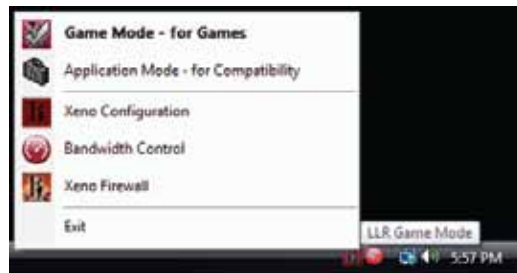
By managing the bandwidth each online game uses, you can continue to game with less lag and smoother online gameplay while listening to streaming music, downloading large files, using your favorite voice chat application, or all of these.

To use Killer Bandwidth Control, set the following for your games and applications:

- Priority
- Bandwidth
- Connection Settings

To configure Killer Bandwidth Control:

1. Right-click the **Killer Xeno** tray icon.
2. Select **Bandwidth Control**.
3. Select the **Priority** tab and set the priority settings for your games and applications.



Note: The Game Detect feature automatically identifies online game applications and sets these as high priority (**1 - Game**). You can change these priority settings for your games and other applications as desired.



a. Locate the game or application whose priority you want to change.

Note: Games and applications appear with the file name used by the Windows operating system. These file names may be abbreviated. For example, World of Warcraft may be listed as **WoW.exe**; Call of Duty 4 may be listed as **CoD4.exe**.

b. Select the priority for the game or application:

- **1 Game** — use for most games
- **2 Realtime** — use for applications such as voice chat or streaming music
- **3 Standard** — use for lower-priority applications or applications you do not want to interfere with your game.

c. Set the **Offload** configuration for the game or application:

- **Yes** — the Killer Xeno offloads the network processing for the specific application. (For most games, the default is **Yes**). This setting is recommended for game traffic only.
- **No** — the Killer Xeno does not offload network processing for the application.

4. Select the **Bandwidth** tab and set the Bandwidth settings for the games and applications you want to modify.

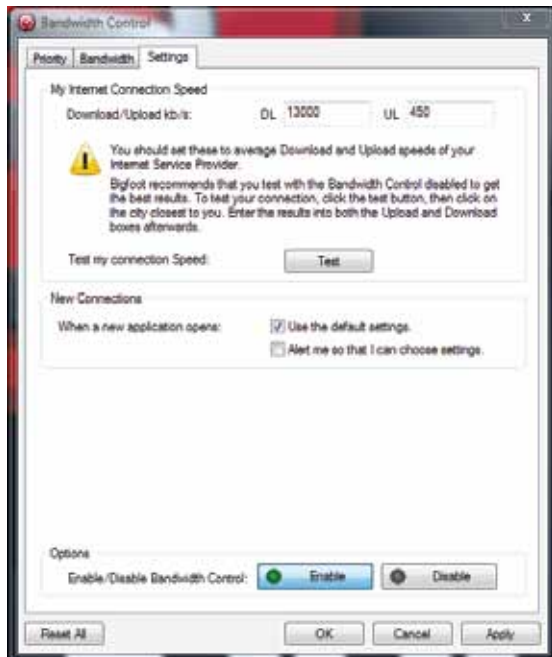


- a. Locate the game or application and set **Download** and **Upload** settings:
  - **Unlimited** — use for most games

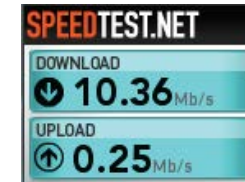
Other programs should be set to lower bandwidths than your game, depending on the total bandwidth available. Try different settings for each program while you game, and make sure to monitor your lag.

Note: Do not assign more bandwidth to a program than you have available. This will impede the performance of your online gaming experience.

5. Select the **Settings** tab and modify the connection settings for the games and applications you want to modify.



- a. Click the **Test** button to launch your default web browser and start a bandwidth speed test.
- b. After the test completes, write down the Download and Upload values, as shown in this example.



- c. Enter the Download and Upload values in the **Download/Upload kb/s** fields next to **My Internet Connection Speed**.

Important: Be sure to enter the actual tested values for your broadband connection. Setting these values too high causes Killer Bandwidth Control to assign too much bandwidth to programs, which can impede your online gaming experience.

6. Click **OK**.

### Configuring Killer Firewall

Killer Firewall protects your online gaming computer from intruders and unauthorized Internet access by programs on your computer.

When enabled, Killer Firewall runs entirely on the Killer Xeno's Network Processing Unit (NPU), allowing you to disable any software firewalls that run in the Windows operating system on your computer. This keeps your computer protected with less performance impact than traditional, software-based firewalls running on your computer.

Killer Firewall protects your computer by notifying you each time traffic wants to come into your computer. It does this by identifying programs that open ports to your Internet connection that are listening for data. Any time a program on your computer wants to open a port to the Internet, and you have not asked it to do so, Killer Firewall notifies you and asks your permission to open the port.

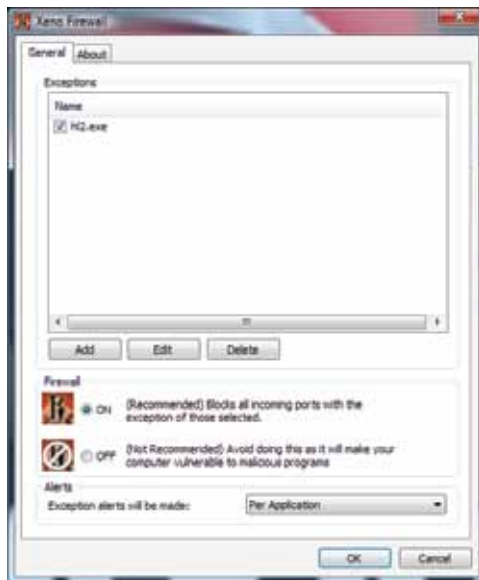
Note: You may not want to enable Killer Firewall if your computer is already protected by a firewall in your home router or gateway.



To enable or disable Killer Firewall:

1. Right-click on the **Xeno Killer Tray icon**.
2. Select **Xeno Firewall**.
3. On the **General tab**, under **Firewall**, select the **On** button to enable Killer Firewall; select the **Off** button to disable Killer Firewall.

Note: When Killer Firewall is enabled, alerts are also enabled automatically.



### Changing Alert Settings

After Killer Firewall is enabled, alerts are enabled automatically.

To change alert settings:

1. On the **General tab**, locate the **Alerts** section.
2. Select **Exception alerts will be made:**
  - **Per Application** — use this setting to receive alerts when a program tries to access the network. This is the simplest option; Killer Firewall notifies you only once when a program is requesting access.
  - **Per Individual Port** — use this setting to receive alerts for every port that programs are trying to access. This is a complex option; Killer Firewall notifies you multiple times if a program needs access to multiple ports.

### Adding Killer Firewall Exceptions

Each time Killer Firewall notifies you about a program that is requesting access to the Internet, it will ask you if you would like to add this program as an exception to the firewall rules. If you select Yes, Killer Firewall automatically adds that exception.

You may need to edit an exception occasionally, especially if you patch or reinstall a program and it then requires a different port or protocol. If this occurs, edit Killer Firewall exceptions.

To edit Killer Firewall Exceptions:

1. On the **General tab**, under **Exceptions**, select the program name for which you want to edit firewall settings.
2. Click **Edit**.
3. Edit the settings.
4. Click **OK** to save the settings and return to the Firewall screen.

### Deleting Killer Firewall Exceptions

You typically need to delete a Killer Firewall exception after a program has changed, been patched, or uninstalled from your computer.

To delete Killer Firewall exceptions:

1. On the **General tab**, under **Exceptions**, select the program name for which you want to delete exception settings.
2. Click **Delete**.
3. Click **Yes** when prompted to confirm the deletion and return to the Firewall screen.

### Technical Support:

---

EVGA is dedicated to supporting our products. If you need to contact Customer Service, please have your system configuration ready, as well as your model number and serial number ready. You will need to register your product before a support technician can assist you. You may register your product online at: <http://evga.com/register>, or when you call for support, a staff member will register you.

- Technical Phone Support: (888) 880-EVGA (3842)
- Fax Support: (714) 528-4501
- Tech Support Web Site: <http://evga.com/support>

### Warranty Information:

---

For warranty information on this product, please visit: <http://evga.com/warranty/>. As a valued EVGA customer; you will be sure to receive a warranty that will fit your needs.

### EVGA Advanced RMA (EAR) Program:

---

The EVGA Advanced RMA (EAR) Program is a program to protect yourself and your product in the case of product failure. For more details please visit: <http://evga.com/EAR>

### EVGA Online Community:

---

To visit the EVGA community message boards, please visit: <http://forums.evga.com>

### EVGA FAQ:

---

To search our knowledge base and product FAQ please visit <http://evga.com/FAQ>

### EVGA Gaming:

---

If you live to game, this is the place for you! We have the best tournaments, prizes and game servers, visit <http://evga.com/gaming>

### FOLDING@EVGA:

---

Distributed computing for the greater good. Did you know you could turn your graphics card into a shared super computer? Visit <http://evga.com/folding>

### MODS RIGS:

---

\$1k Sponsorships for every 200 posts. Come show off your rig and join in on one of the biggest things happening at EVGA, visit <http://modsrigs.com>

### Compliance Information

---

#### FCC Compliance Information

This device complies with FCC Rules Part 15. Operation is subject to the following two conditions: This device may not cause harmful interference, and this device must accept any interference received, including interference that may cause undesired operation. This equipment has been tested and found to comply with the limits for a Class B digital device, pursuant to Part 15 of the FCC Rules. These limits are designed to provide reasonable protection against harmful interference in a residential installation. This equipment generates, uses and can radiate radio frequency energy and, if not installed and used in accordance with the manufacturer's instructions, may cause harmful interference to radio communications. However, there is no guarantee that interference will not occur in a particular installation.

If this equipment does cause harmful interference to radio or television reception, which can be determined by turning the equipment off and on, the user is encouraged to try to correct the interference by one or more of the following measures: Increase the separation between the equipment and signal source. Connect the equipment to an outlet on a circuit different from that to which the signal source is connected.

Consult the dealer or an experienced computer technician for help. The use of shielded cables for connection of the monitor to the graphics card is required to ensure compliance with FCC regulations. Changes or modifications to this unit not expressly approved by the party responsible for compliance could void the user's authority to operate the equipment.

#### CE Compliance Information

EMC Directive 89/336/EEC and Amendment 92/31/EEC, Class B Digital Device EN 50081-14, Generic Emissions Standard for Residential, Commercial and Light Industrial Products (EN 55022/CISPR 22, Limits and Methods of measurement of Radio). (EN 55022/CISPR 22, Limits and Method of Measurement of Radio Interference Characteristics Information Technology Equipment) Warning: This is a Class B product. In a domestic environment this product may cause radio interference in which case the user may be required to take adequate measure. EN 50082-1, Generic Immunity Standard for Residential, Commercial and Light Industrial Products (IEC 801-2, IEC 801-3, IEC 801-4)

### Trademark Information

2000-2009 EVGA Corp. EVGA, the EVGA logo and combinations thereof are trademarks of EVGA Corp. Bigfoot Networks, the Bigfoot Networks Logo, Killer and the Killer logo are trademarks of Bigfoot Networks, Inc. All brands, products and companies are trademarks or registered trademarks of their respective companies. EVGA Corp. reserves the right to change product specifications without prior notice.