

EVGA®

EVGA®

EVGA Corp. • 408 Saturn Street • Brea, CA 92821 • [www.evga.com](http://www.evga.com)

**EVGA SC17 Gaming  
User Manual**



**Introducing the EVGA SC17 Gaming, the apex of portable performance for the gamer and professional.**

Powered by an Intel i7 quad core processor and an NVidia GTX graphics card, M.2 PCI-E SSD's, 1TB of storage, 32GB of DDR4 RAM, USB 3.1 type C, Intel Gigabit LAN, Bluetooth 4.2, and a 4k IPS screen; giving you the best performance components in a portable package.

The EVGA SC17 is a complete turn-key solution, comes with Windows 10 Home 64bit, and a minimalist set of preinstalled software. There is no need to clutter a new PC with software you do not need, so we included an overclocking and monitoring tool, and the Intel Storage Management software and nothing else, leaving it clean, sleek, and fast, just what you need in a Performance Laptop.



# Table of Contents

Introduction .....	1
Table of Contents .....	2
What's in the Box? .....	3
Serial Number and Registration .....	3
Technical Support .....	4
Features .....	4
Specifications .....	5
Getting Started .....	7
Configuring PrecisionX Mobile .....	7
Comfort with Continuous Use .....	14
Remove Warning .....	15
Compliance .....	16

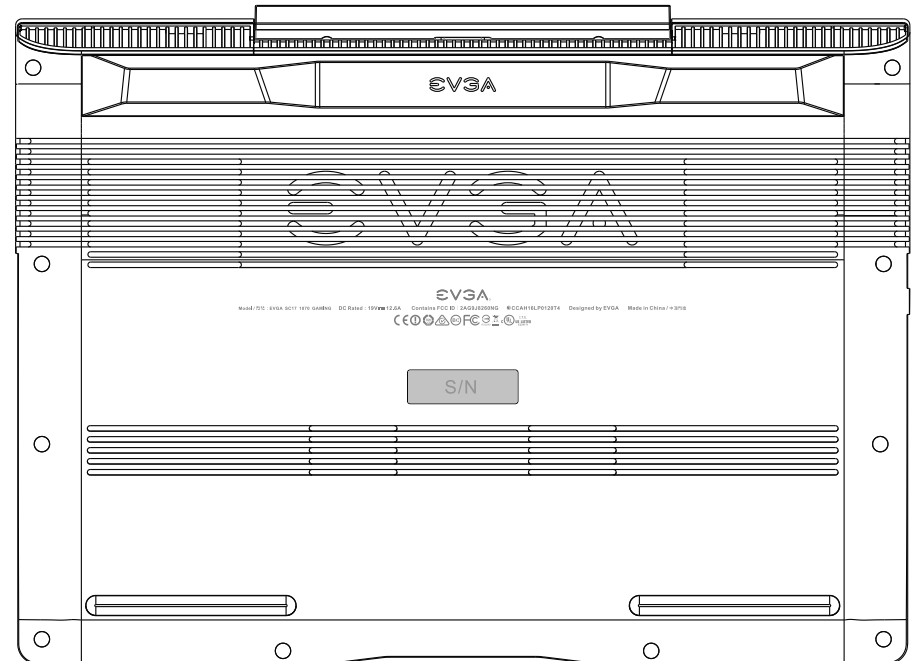
# What's in the box?

## Package Contents:

- EVGA SC17
- Power Adapter
- Power cord
- Manual
- 1 pcs USB type C to A cable
- 1 pcs Audio cable

# Serial and Registration

The serial number and part number sticker will be on the bottom of the laptop here (see below pic).



If you already have an account at [www.evga.com](http://www.evga.com) then you can log in and under “Member Home” you can select Product Registration and follow the prompts for registering your new Notebook.

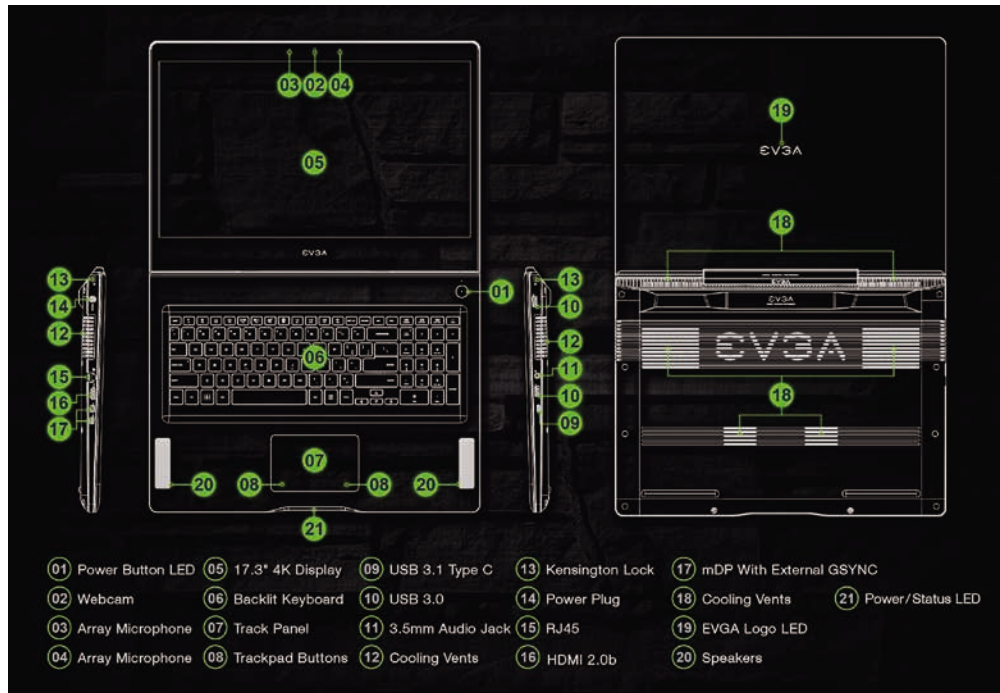
If you do not have an account, you will first need to go to [www.evga.com](http://www.evga.com) and click on Member Login at the upper right, and click the “Sign Up” button, and follow the prompts. Once your account is created and activated you can register your Notebook.

With the Notebook registered, you can see your warranty status and contact our Product support if there are ever any questions or concerns.

# Technical Support

EVGA has industry leading Customer Service / Technical Support in the US available via phone and email. Customer service can be reached at 888-881-3842 or at [support@evga.com](mailto:support@evga.com), and you can also request assistance from support from the “My Products” selecting your EVGA SC17, click on Support Tickets, and then click on Submit a Ticket.

# Features



EVGA Logo LED (19) can be controlled 10 levels of brightness in Precision X Mobile.

## Power/Status LED

- Full Brightness Light – Power On/Plugged In
- Blinking Light – Sleep/S3
- Off – Power Off
- Medium Brightness Light – Running on Battery
- Flashing Light – Battery Low (5% left)

# Specifications

## Dimensions:

408mm (16.06 inches) X 295.5mm (11.63 inches) X 28.25mm (1.11 inch)  
Weight: 4.065kg, 8lb 15.39oz

## CPU:

Intel i7-6820HK Skylake-H Mobile Unlocked CPU

## Operating System:

Windows 10 Home 64

## System RAM:

32GB 2666MHz DDR4 SO-DIMM's (16GBx2)

## Graphics:

NVidia GeForce GTX-1070 with 8GB GDDR5

## Panel:

17.3 UHD 4K LCM

## GSYNC:

Support for 2 EXTERNAL GSYNC monitors and Support internal GSYNC

## Audio:

Realtek ALC 255  
Stereo Speakers  
3.5mm Headphone /Mic Jack

## Storage:

256GB M.2 PCI-E SSD  
1TB 7200RPM SATA 6G

## Ethernet:

Intel 219-V 10/100/1000 Controller  
1x RJ45 Connector

## Wi-Fi:

Intel Snowfield Peak AC-8260 NGW

## Bluetooth:

BT 4.2

## USB:

2x USB 3.0 Type A  
1x USB 3.1 Type C

**Video Out:**

- 1x HDMI 2.0b
- 2x mDP

**WebCam:**

- FHD 1920x1080
- Integrated Digital Mic

**Touchpad:**

- Click pad 1.5

**Keyboard:**

- Full sized white backlit with number pad.
- EVGA Font

**Keyboard Key Functions:**

- F1/F2: LCD Backlight Brightness
- F3/F4: Keyboard Backlight Brightness
- F5: External Mode (output on HDMI port)
- F6: LCD close
- F7: Touchpad off
- F8: Windows Key off
- F9/F10/F11: Volume Adjust
- F12: Flight mode (WiFi/Bluetooth off)
- Home/pg up/pgdn/end: Music Track

## Getting Started

First, connect your EVGA SC17 to the charger to get the battery charging. First plug the power cable into the charger and plug that into the wall outlet, and connect the charger to the left side of the Notebook.

Press the power button to start the EVGA SC17.

The first time you run your EVGA SC17 have it plugged in for at least 3 hours to allow it to fully charge.

## Configuring PrecisionX Mobile for the EVGA SC17

PrecisionX Mobile is designed to be your monitoring and tuning suite for your EVGA SC17 Notebook. This will cover monitoring in the upper section as well as specific controls for CPU, Motherboard, Graphics card, lighting, and general non-performance/appearance options.

**CPU Dashboard:**



**CPU Clock:** This will show the frequency your CPU is currently running at. This will vary based on load, background applications, etc. It is common, without overclocking, to see this specific model of CPU fluctuate between 800 MHz and 3800 MHz (3.8 GHz). Overclocking will change the values listed here but the clocks will still vary.

**CPU Temp:** This displays the temperature in Celsius of the CPU socket which the probe is attached to, the individual Core temp will vary from this as well and depending on ambient temps and load level can vary from below 20°C up to 90°C.

**CPU Voltage:** this monitors the current VCore of the CPU. This will vary on its own, however in override mode it can be set to a static value. CPU voltage is read in millivolts, so 1000mv is 1.0 volts.

**System temp:** This is the temp of the PCH (chipset) on the motherboard. This will typically be lower than the CPU temp.

**Memory clock:** This is the frequency your system RAM is running at. The default speed is 2666MHz

### GPU Dashboard:



**GPU Clock:** Current speed of the core clock for the GPU. This will vary based off of load and temperature.

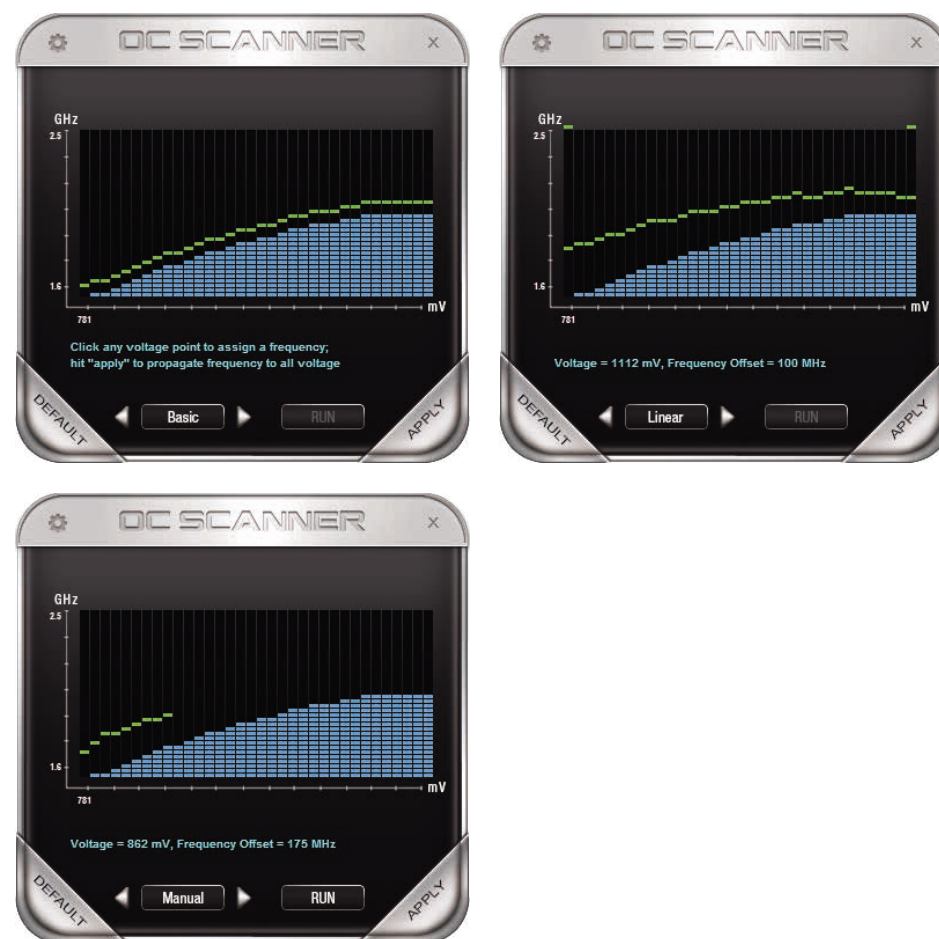
**GPU Temp:** Current GPU temperature, this will vary but will typically between 25°C and 35°C at idle depending on ambient temps, and has a maximum safe limit of 86°C under heavy load.

**GPU Voltage:** Current voltage of the GPU, this will vary based on load as well as any overlocks applied.

**Fan RPM:** This is the speed at which the cooling fan runs. This will vary based off of temperature of internal components, the fan curve is set from the factory.

**GPU Memory:** This is the current frequency the memory is running at. This will vary based on load. Also it is NORMAL that the memory clock will be displayed at half the actual speed, as this is part of the function of DDR RAM.

Click on the OC button in the lower left to bring up the new overclocking tool, which is able to provide an auto tune. This functions much like the desktop version of the 10 series and Precision XOC. With full support for Basic, Linear, and Manual curves.



### CPU Tab:

This displays the settings for the CPU.



Core 1: Displays the current max multiplier for Core 1  
Core 2: Displays the current max multiplier for Core 2  
Core 3: Displays the current max multiplier for Core 3  
Core 4: Displays the current max multiplier for Core 4  
Ring: Displays the current max multiplier for the Ring

VCore mode: Selects the optional CPU overclock mode between Adaptive and Override.

Adaptive – Provides a Voltage target and an offset voltage, providing the BIOS with a desired range to run within.

Override – Sets all voltage to a static value.

### GPU Tab:

This displays the settings for the GPU.



Core Clock Offset: Increase the upper threshold for boost of the GPU clock.

Memory Clock Offset: Increase the upper threshold for boost of the Memory clock.

## Lighting Tab:

This displays the current settings for the backlight settings on the keyboard.



**Manual Control:** This is a slider to control the brightness of the Keyboard backlighting.

**Breathe:** This creates a breathing effect of the backlighting. In essence it slowing increases and decreases the backlight, oscillating indefinitely.

**GPU Utilization:** This is the percentage of the GPU being used across all applications cumulatively.

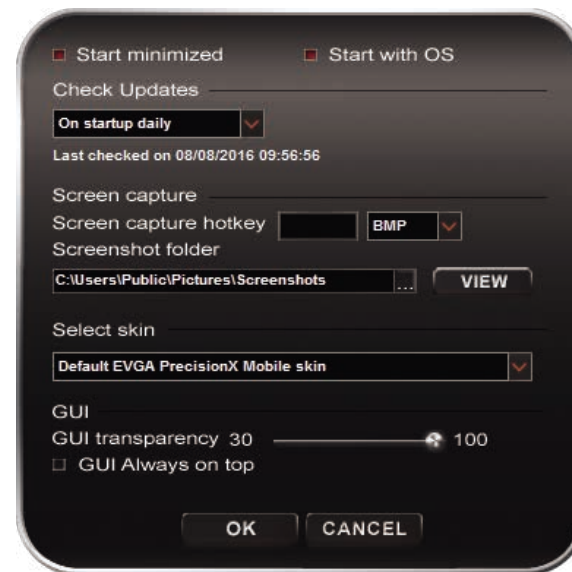
**GPU Clock:** This displays the current speed in MHz that the GPU is running.

**GPU Temp:** This displays the current temperature, in Celsius, of the GPU.

**Cover Logo:** This toggles the cover logo LED has 10 levels of brightness controlled by the slider bar.

## Options Tab:

Settings for controlling PrecisionX Mobile's features outside of hardware.



**Start Minimized:** When the EVGA SC17 Notebook boots, it launches the PrecisionX application, but starts it minimized.

**Start with OS:** This enables PrecisionX Mobile to be launched with the operating system.

**Check Updates:** This is where you check for updates for your PrecisionX Software, and schedule when to check it automatically.

**Screen Capture Hotkey:** This designates a key to be pressed to capture a screen image.

**Screenshot Format:** This allows you to select the file type the screenshots are saved in.

**Screenshot Folder:** This designates a location to store the screenshots taken with above step. Browse and View buttons help you to select and verify the proper location.



Select Skin: This is to select the background visuals, font, and color options of the UI for PrecisionX Mobile.

GUI Transparency: This is a slider to set the opacity of the UI.

GUI Always on top: Enabling this option will make this software always on top of other programs you have running.

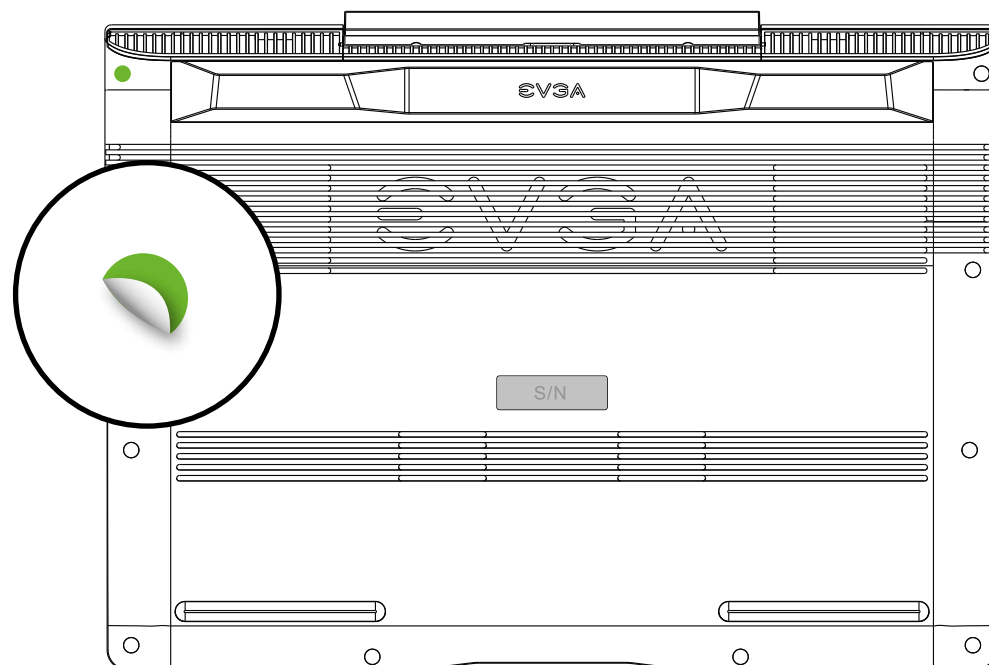
NOTE: The above images of PrecisionX Mobile OC Utility are beta version only, for the latest version please use "Check Updates" feature in PrecisionX Mobile or visit EVGA.com

## Comfort with Continuous Use

1. Position your EVGA SC17 directly in front of you, if you have an external mouse; use it adjacent to the EVGA SC17 and with easy reach. Do not place it in a way you need to stretch to reach the mouse or EVGA SC17.
2. Adjust the height of your chair and/or desk to put the keyboard just slightly below elbow height.
3. Keep your posture straight and your shoulders relaxed.
4. During gameplay or long work periods, keep your wrists relaxed and straight. When doing repetitive tasks avoid keeping your hands and wrists flexed or extended for prolonged periods of time.
5. When using the EVGA SC17 for long periods of time do not rest your wrists on a hard surface, instead use a wrist rest for proper wrist support. This should minimize fatigue.
6. Sitting in the same position all day is not ideal. You should get up, walk around, moving legs and arms at regular intervals.

## Remove Warning

Removing the sticker on the screw hole indicates the chassis has been opened. If chassis is opened all components must be returned to original condition before returning for service.



# Compliance Information

## FCC Compliance Information

This device complies with FCC Rules Part 15. Operation is subject to the following two conditions: (1) This device may not cause harmful interference, and (2) this device must accept any interference received, including interference that may cause undesired operation. This equipment has been tested and found to comply with the limits for a Class B digital device, pursuant to Part 15 of the FCC Rules. These limits are designed to provide reasonable protection against harmful interference in a residential installation. This equipment generates, uses and can radiate radio frequency energy and, if not installed and used in accordance with the manufacturer's instructions, may cause harmful interference to radio communications. However, there is no guarantee that interference will not occur in a particular installation. If this equipment does cause harmful interference to radio or television reception, which can be determined by turning the equipment off and on, the user is encouraged to try to correct the interference by one or more of the following measures: (1) Reorient or relocate the receiving antenna, or (2) Increase the separation between the equipment and receiver, or (3) Connect the into an outlet on a circuit different from that which the receiver is connected, or (4) consult the dealer or an experienced radio/TV technician for help. Changes or modifications to this unit not expressly approved by the party responsible for compliance could void the user's authority to operate the equipment.

Federal Communications Commission (FCC) Radiation Exposure Statement

This EUT is compliance with SAR for general population/uncontrolled exposure limits in ANSI/IEEE 1-1999 and had been tested in accordance with the measurement methods and procedures specified in IEEE 1528-2013.

Contains Transmitter Module FCC ID : 2AG9J826ONG

## CE Compliance Information

Generic Radiation Interference Standard for Information Technology Equipment. (EN 55022: 2006, Class B), (EN 61000-3-2: 2006), (EN 61000-3-3: 1995 + A1: 2001 + A2: 2005). Warning: This is a Class B product. In a domestic environment this product may cause radio interference in which case the user may be required to take adequate measure. Generic Immunity Standard for Information Technology Equipment.(EN 55024: 1998 + A1: 2001 + A2: 2003).

## Trademark & Copyright Information

2001-2016 EVGA Corp. EVGA, the EVGA logo and combinations thereof are trademarks of EVGA Corp. All brand names, company names, service marks, logos, and trademarks of the company, or its affiliates or licensors are trademarks or registered trademarks of the company or its subsidiaries, affiliates or licensors in the US and other countries. Other company, products and service names may be trademarks or service marks of others. EVGA reserves the right to terminate this license if there is a violation of its terms or default by the Original Purchaser. Upon termination, for any reason, all copies of Software and materials must be immediately returned to EVGA and the Original Purchaser shall be liable to EVGA.com CORP for any and all damages suffered as a result of the violation or default.

## Legal Information

All material including but not limited to, text, data, design specifications, diagnostics, graphics, logos, reference boards, files, images, drawings, and software including this document and the software itself (together and separately) is owned, controlled by, licensed to, or used with permission by EVGA Corporation and is protected by copyright, trademark, and other intellectual property rights. All is being provided "as is", EVGA Corporation makes no warranties, whether express or implied, statutory or otherwise with respect to the materials and expressly disclaims all implied warranties of non-infringement, merchantability, and fitness for a particular purpose. In no event shall the liability of EVGA Corporation for claims arising from the use of the materials by anyone exceed the original purchase price of the materials (or replacement of the materials at EVGA Corporation's option). All information furnished is believed to be accurate and reliable. However, EVGA Corporation assumes no responsibility for the consequences of use of such information or for any infringement of patents or other rights of third parties that may result from its use, or use of the Software. No license is granted by implication or otherwise under any patent or patent rights of EVGA Corporation except as expressly provided herein. All specifications mentioned in this publication are subject to change without notice.

CAUTION: Risk of Explosion if Battery is replaced by an Incorrect Type.  
Dispose of Used Batteries According to the Instructions.

## ENERGY STAR complied product



ENERGY STAR is a joint program of the U.S. Environmental Protection Agency and the U.S. Department of Energy helping us all save money and protect the environment through energy efficient products and practices. All EVGA products with the ENERGY STAR logo comply with the ENERGY STAR standard, and the power management feature is enabled by default. The monitor and computer are automatically set to sleep after 15 and 30 minutes of user inactivity. To wake your computer, click the mouse or press any key on the keyboard. Please visit <http://www.energy.gov/powermanagement> for detail information on power management and its benefits to the environment. In addition, please visit <http://www.energystar.gov> for detail information on the ENERGY STAR joint program.

**NOTE:** Energy Star is NOT supported on FreeDOS and Linux-based operating systems.